



# St Edward Academy

## Parent-Student Handbook

1310 S Palestine St, Athens Texas 75751  
(903) 675-2509 x110

[www.stedwardacademy.org](http://www.stedwardacademy.org)

## Introduction

St Edward Academy is a Catholic Christ-centered school with small class sizes for individual attention providing a safe, faith-filled environment to partner hand in hand with parents. It is organized as a non-profit, charitable organization. SEA appreciates facility access by St Edward Catholic Church, a separate organization.

A handbook cannot reasonably address all foreseeable academic, disciplinary, or other school situations. Certainly, there are many commonsense policies that will not be included in its pages. Therefore, the administration reserves the right to rule on any individual situation(s) surrounding student academic performance, student behavior, or other school-related issues that are explicitly or implicitly stated or implied in this handbook. The administration reserves the right to rule on any situation that is not explicitly addressed in this handbook or in which there is a perceived ambiguity

## Schedule

Monday: 8:30 am – 3:00 pm

Wednesday: 8:30 am – 3:00 pm

Friday: 8:30am – 3:00 pm

## Important Contact Information

Location: SEEM Center, 1310 S Palestine St Athens, TX 75751

School Phone: 903-675-2509 x110

Email: [Info@stedwardacademy.org](mailto:Info@stedwardacademy.org)

Website: [www.stedwardacademy.org](http://www.stedwardacademy.org)

Find us on Facebook @ St. Edward Academy

St. Edward Academy admits students of any race, color, national and ethnic origin to all the rights, privileges, programs, and activities generally accorded or made available to students at our homeschooling cooperative. It does not discriminate on the basis of race, color, national and ethnic origin in administration of its educational policies, admissions policies, and other programs administrated by our hybrid school.

## **St Edward Academy Mission**

As we work to extend the reign of Christ, it is the mission of St Edward Academy to support and assist parents in the Catholic education of their children. Under the patronage of St. Edward, the Confessor, and while striving for academic excellence, we work to instill an abiding love of God and neighbor in each student. St Edward Academy offers a combination of the best that traditional Catholic schools have to offer with the flexibility of homeschooling.

SEA works well both for parents wanting a traditional Catholic school and for homeschooling parents looking for more structure.

SEA supplements the education that parents are providing at home in a low-pressure classroom setting.

SEA makes a high-quality, low-cost Catholic education available to all.

SEA maintains small class size allowing enhanced learning, sharing and individual attention.

SEA focuses on academic excellence and character development for each student while empowering parents as primary educators to maintain an active role in their child's education.

SEA imparts the doctrines of our Catholic faith in their fullness as both knowledge to be learned and a life to be lived.

### **In Support of St Edward Academy Mission**

SEA follows the Guidelines and Procedures for Ethics and Integrity of the Diocese of Tyler which includes Vertus training and background check. Our entire staff, all instructors and assistants are formally committed to the Code of Conduct of Church Personnel and are in support of all Diocese of Tyler policies.

St Edward Academy carefully selects teachers based on their qualifications and specialized knowledge of the subject matters to be taught. Many of the SEA teachers hold degrees and all teachers pursue a goal of a high standard of academic excellence and moral development for each student.

## **Our Curriculum**

All subjects are taught from a Catholic perspective. Teachers present lessons in the main academic subjects for each grade. We offer class instruction, guided discussions, graded assignments, and quarterly progress reports.

### **Classwork/Homework**

Both the classroom instruction and the schoolwork on home days are equally important for each student's academic success. The curriculum that SEA follows is a five day/week program for thirty-six weeks. Our Academy calendar is based on this schedule. Our teachers are committed to teaching the required concepts and material on Mondays, Wednesdays, and Fridays each week. Homework for Tuesday and Thursday will be assigned by subject and generally should require less than 45 minutes nightly. It is intended to serve these essential functions: 1. To reinforce skills and concepts taught at school. 2. To develop student responsibility and learning independence. In addition to homework, students are strongly encouraged to read at home every day. Parents are expected to oversee their child's homework to make sure assignments are completed on time and that the subject matter and concepts are understood. Parents may be asked to check and sign their child's work.

#### **Absence/Tardiness**

If your child must be absent due to illness, please report the absence to the director and/or the classroom teacher. Email is preferred. Following an absence, it is the responsibility of the student, with help from their parent(s), to make up the missed lessons and assignments at home for each day absent.

#### **Keep Sick Children Home**

Please do not send a sick child to class. A child with a fever should be kept home and should be fever-free for 24 hours prior to returning to class. If your child has vomiting or diarrhea due to illness in the last 48 hours, please do not send them to class.

### **Quarterly Progress Reports**

A paper copy of your child's quarterly progress reports will be sent home after the end of each quarter with grades and comments from the teachers. The progress reports may be used as proof of educational progress for homeschoolers. Parents may also create their own homeschooling progress report. Templates can be found on many homeschooling websites and are accepted by colleges and universities.

## **Transcripts**

Each family is responsible for keeping a transcript of completed classes and assigned grades. Many homeschooling organizations can provide a high school transcript template to assist families with their records.

## **Religion Class Policy for Our Non-Catholic Students**

As a Catholic hybrid school, the Catholic Faith is presented in almost every subject at SEA. We welcome students from different religious backgrounds with the understanding that they will participate fully in all subjects, including religion. For non-Catholic students, we offer the option of auditing religion class which exempts them from completing assignments but does not exempt them from actively and respectfully listening to the lessons.

## **Parish Faith Formation**

St. Edward Academy functions as another section of Faith Formation for those students within the parish boundaries of St. Edward Catholic Church. Your registration with us serves as registration for your child's Faith Formation class, including sacrament classes for reception of First Penance, First Holy Communion and Confirmation. If you live outside our parish boundaries, please check with your Pastor or Faith Formation Director to make sure this will meet the sacramental preparation requirements of your parish.

## **Admission**

St Edward Academy welcomes all students from St. Edward Parish and surrounding communities. Admissions are on a first-come-first-served basis and space is limited. Priority will be given to the parishioners of St. Edward Catholic Church. Parishioners of other churches are welcome as space is available.

## **Tuition Costs/Payments**

Tuition costs, including registration and other fees, can be found on the registration forms and on our website at [stedwardsacademy.org](http://stedwardsacademy.org). Tuition payments may be made online or collected through the St. Edward Academy Director's Office. Payment options include:

- Tuition in full no later than first day of class.
- Signed payment agreement stating terms to be completed before year end.

## Fair Share Hours

St. Edward Academy runs on volunteer power. We require each SEA family to volunteer 20 fair share hours per year to help keep costs down and tuition low. A list of available volunteer positions will be published on our website and in the weekly emails from the SEA director. Parents who are unable to fulfill this obligation may choose our buy-out option and pay a fee of \$300 (equivalent of 20 hours \$15/hour) for the year at the time of registration. Parents must complete their fair share hours by the end of the year or they will be charged a prorated buy-out fee based on the hours completed and recorded at SEA.

Grandparents, aunts, and uncles can also serve for most volunteer positions at the discretion of the Director. In addition, SEA holds special events throughout the year that are fun for our families but require extra volunteer help to make them happen. Those events may include:

- Back to School Night
- St Nicholas Breakfast
- Daddy/Daughter
- Mother/Son Dance
- Teacher Week Lunch
- Catholic School Week
- Lenten Service Projects
- Fiddlers Reunion Kid Zone
- K of C Hoop Shoot
- Volunteer Celebration
- Kindergarten Graduation

Please be generous if you are asked to help. If you have questions about volunteering, please email the director at [info@stedwardacademy.org](mailto:info@stedwardacademy.org).

## Books and Supplies

Books lists will be provided by SEA to the parents to purchase prior to the start of the academic year.

## Communication

### Parent Communication

Throughout the academic year, official communication will be sent out to parents by the SEA administration. These messages will be sent through Flocknote.



Families will be added to Flocknote when they submit their registration for St.

Edward. Flocknote is a communication tool meant to unite community members and allow us to easily send information via email and text message. Your information is secure, as all data is transmitted across an encrypted internet connection. Terms and conditions of Flocknote state that your information is never sold, rented, or given away to any third parties.

Teachers also will share contact information at the start of the year. Teachers may communicate through phone, text, email or google classroom. Although we send quarterly progress reports, we do not hold formal parent/teacher conferences. Our teachers are always willing to discuss your student's progress. Please contact the teacher to make an appointment.

SEA encourages open and positive communication between the home and the school. From time to time, parents may have a concern regarding their student's progress in an academic course or co-curricular activity. When this happens, parents are asked to address their concerns to the appropriate person, respecting the chain of responsibility, in a respectful and professional manner.

## **Security**

### **Security**

Doors will be locked after the students have entered the building and classroom doors will be kept locked during class sessions. Two adults (teacher and aide) will be in each classroom, and hall monitoring will be available at all times.

### **Supervision & Closed Campus**

Students must stay on parish property for their entire day until they are picked up by a parent or parent designate. Students may not leave the academy property for any reason without permission. Students may leave early only if a parent checks in at the director's office to sign their child out with the director. Students are not permitted to "hang out" in areas not directly supervised by teachers, e.g., stairwells, bathrooms, supply closets, or kitchen.

### **Chapel Policy**

We have the privilege of having the Eucharistic presence of Our Lord Jesus Christ close by in the St. Edward Chapel. Students are permitted to visit the chapel during lunch and recess times with the permission of their teacher. This privilege is subject to the discretion of the Director. Students visiting the Chapel are not allowed to hang out in the area around the Chapel.

All students attend weekly noon Mass on Wednesdays.

## **Classroom Visits**

Parents are welcome to visit their child's classroom and are encouraged to get to know their child's teacher. Parents are always welcome to check in at the director's office and drop by for a brief visit. As SEA has limited space, longer or frequent visits require prior permission from the director and classroom teacher. Parents who have concerns about their child's performance in class or their child's adjustment to the classroom setting should arrange a meeting with their child's teacher to discuss this in detail. If parents would like to bring a snack to share, for example, for a birthday celebration, this must be cleared with the child's teacher in advance.

## **Photos and Press Releases**

From time to time, photos or videos may be taken of special events which may include your child. They may be used on our website or our closed-group Facebook page, on flyers, the yearbook, or to accompany possible newspaper articles. Please notify us at the beginning of each academy year if this is not acceptable to you and we will comply with your request.

## **Academy Calendar & Cancellations**

Our Academy calendar covers the period of August through May. The SEA calendar is located on the SEA website, and copies will be available at during Orientation night. The calendar lists class days, end-of-quarter dates, and holidays. We encourage you to enter these dates on your family calendar. Please note there are days that the county school children have off, e.g., teacher's workdays, when SEA will be holding classes.

## **Inclement Weather Cancellation**

While we do NOT follow public school district schedules. SEA does follow Athens ISD closures for inclement weather. Class cancellations will be announced to families via Flocknote.

# About Our Day

The SEA Day begins at 8:30 am with a brief assembly of all students for opening prayer and the Pledge of Allegiance.

Students should arrive at SEA each day with all necessary books and supplies. A list of required supplies for each grade will be given to parents before the start of the academic year. This may include notebooks, personal sharpened pencils and folders.

## A Note About Student Belongings

Space is limited, and students should only bring what is necessary for their classes, lunch, and outerwear for outdoor lunch/recess. All belongings need to stay with students for the entire day. Student belongings (changes of clothes, makeup, etc.) are not allowed to be stored in the bathrooms.

## Mid-Morning Snack/Lunch

Students should come each day with a healthy snack, lunch and drink. Approximately one-half hour is allotted for lunch and recess. If you would like your child to eat the snack or lunch you have provided for them, please make it clear to your child that they should not trade lunches with other students. Students will not have use of kitchen facilities (microwave, refrigerator), so please keep this in mind when packing your child's lunch (see the kitchen policy). Although it is a closed campus we welcome parents to eat lunch with their child(ren).

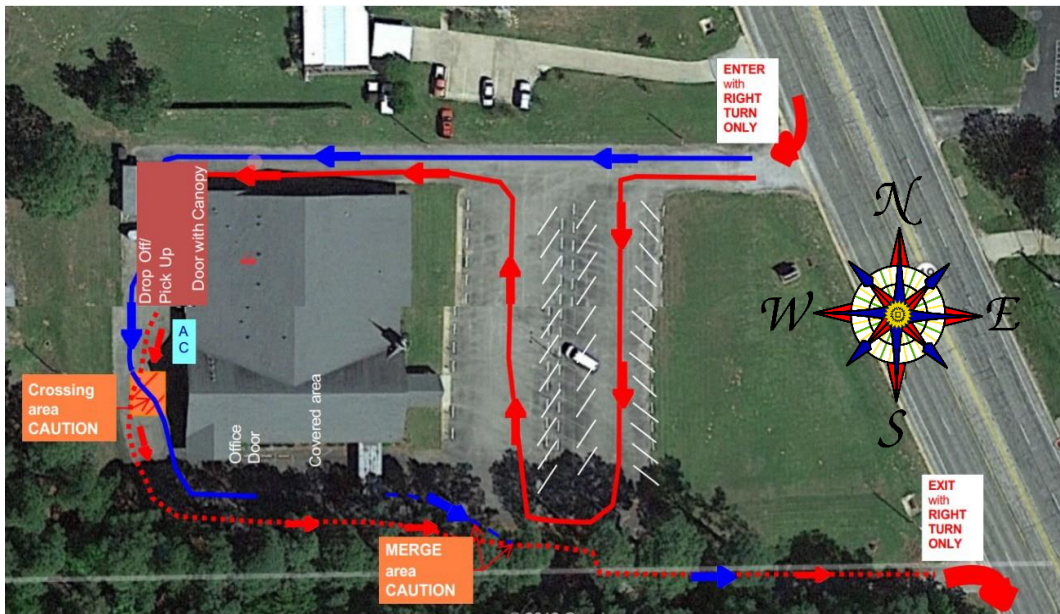
For safety reasons, containers and bottles brought to class should not be made of glass. Students are encouraged to bring a non-glass water bottle with them each day. Please note that drinks (other than bottled water) and gum must not be consumed in the classrooms.

## Recess

Students recess outside whenever possible and should dress according to the weather, including warm jackets, gloves and hats during the winter months. For safety reasons, closed toe shoes should be worn that are appropriate for playing on a paved surface. Open-toed shoes and flip flops are not permitted. Students will recess indoors during inclement weather.

## End of Day Clean-Up

Students in all grades help with daily cleaning up, both at lunch and at the end of the day. When everyone pitches in, clean-up goes quickly. The teachers



will guide the students with the daily tasks.

## Arrival and Dismissal Procedures

Our main goals being safety and a smooth flow of traffic, we request that parents exercise patient and courtesy while following these guidelines.

- No cell phone use while driving through church property
- All vehicles enter from the NORTH entrance.
- All vehicles exit from the SOUTH entrance.
- Students will be picked up at the rear of the building, under the canopy based on last name or grade. Name placards will be provided at start of year.
- Be alert to the pedestrian crosswalk at the back of the facility.

**Notify the school if someone is picking up your child that is not listed on the emergency contact form.**

### Late Pick-up Policy

If you are more than 15 minutes late for dismissal, please contact the director. A rare, unexpected late arrival for dismissal is understandable if you are completely unable to find a backup adult to pick up your children. If late pickups become a frequent occurrence, a fee will be assessed for arriving more than 15 minutes after dismissal. Fees incurred will be mailed as a bill to your home address and will be due upon receipt.

# Student Code of Conduct

St. Edward Academy aims to educate the whole person in mind and heart, assisting students in achieving academic excellence. Each student is expected to show reverence to God and respect to teachers and staff. All students are required to be charitable and kind to their peers and take care of parish property. The Student Code of Conduct is a summary of positive behaviors expected of each student. Students will be given a copy of this code to read and sign during the first week of classes. Each student's attendance at SEA implicitly includes their agreement to the policies outlined in this handbook and to the expected behaviors outlined as following:

## **Be Respectful**

- Of teachers, staff and guests. Address teachers and staff with respect and listen attentively in class. Cheerfully greet teachers and staff each day.
- Of church property. Keep classrooms and restrooms clean and orderly.
- Stay out of outdoor landscaped areas, throw trash away and leave everything better than you find it.

## **Be Prepared and On Time**

- With all homework assignments completed and dressed in proper uniform.
- With all necessary books, supplies and lunch/snack.

## **Be Where You Should Be**

- In class during class time, in dining hall during supervised lunch, and keep bathroom breaks brief.
- Stay out of restricted areas such as supply closets, stairwells, and kitchen.
- Remain on campus until picked up by a parent or parent designee.

## **Be Charitable**

- Be encouraging and kind to all making every effort to include multicultural/multilingual peers.
- Peacefully work out differences using respectful language and listening patiently.

## **Be Helpful**

- Assist teachers with carrying books or heavy loads.
- Hold doors open for teachers and other students.
- Help fellow students who are struggling with homework.
- Cheerfully pitch in to help when asked.

## **Be Mindful of the Rules**

- Never bring weapons including toy weapons, alcohol, drugs, cigarettes, or vape devices onto parish property.
- Refrain from public displays of affection. This includes hand holding, hugging, kissing, or any type of prolonged physical contact.
- Leave valuables at home. SEA is not responsible for valuables brought to class.

All students have the right to an educational environment free from physical or verbal harassment. The definition of bullying is the “unwanted, aggressive behavior among school aged children that involves a real or perceived power imbalance.” (stopbullying.gov) Physical or verbal mistreatment of a person may include but is not limited to:

- Hurtful teasing or mocking,
- Pranks against one student,
- Notes poking fun of others,
- Intentional exclusion of a student (including the usage of language other than English to intentionally exclude another peer)
- Physical harassment including, but not limited to spitting, pushing, kicking, biting or any inappropriate touching.

Although playful interactions among friends often include joking, mild teasing, fun pranks and note passing, these types of behaviors, though intended for fun, can easily cross the line towards bullying behaviors. Teachers and staff are alert for such situations, but students are encouraged to make their own observations and report any questionable circumstances, whether involved directly or indirectly, to the attention of a teacher or director. No matter how seemingly minor, all matters involving any type of alleged harassment will be taken seriously, investigated, and dealt with accordingly for the safety and well-being of all SEA students.

## **What NOT to Bring to Class**

SEA is not responsible for lost or stolen valuables, so please leave all valuables at home. BY PERMISSION THE DIRECTOR ONLY include cell phones for medical reasons and items for a specific activity designated by the teacher (show and tell, rainy day recess). A parent or designated adult may retrieve confiscated items at the end of the day from the teacher or director. SEA is not responsible for valuables left in bags.

Skateboards/Rollerblades, Skateboarding and Rollerblading on parish property is not allowed.

### **Drugs, Alcohol, Cigarettes, Cigars, Vaping**

Drugs, alcohol, and smoking (including vaping) are prohibited anywhere on the parish property. If seen, these items will be confiscated, and a parent will be notified. Appropriate disciplinary action will follow.

### **Weapons**

Weapons of any kind (guns, knives, pocket knives, razor blades), including toy weapons such as squirt guns or rubber band shooters are strictly prohibited. If seen, these items will be confiscated, and a parent will need to retrieve them at the end of the day. Appropriate disciplinary action will follow.

## Discipline at SEA

Good behavior and proper attitudes toward school originate in the home. Once the child is in school, however, the school shares the responsibility with the parents to help the student develop appropriate behavior and effective study habits. Teachers and staff are responsible for supervising student behavior by utilizing effective classroom management methods that reinforce SEA policies in a consistent and fair manner. While most misbehaviors are minor and warrant only a verbal warning, continued disruptive behaviors and serious misconduct may result in the following disciplinary actions depending on the severity of the situation:

Any non-academic concerns that require assistance or intervention to achieve resolution should be brought to the attention of SEA staff. We ask that all matters only be discussed among parties involved and with SEA staff to avoid unintentional gossip that can result from soliciting advice and input from uninvolved parties. The following chain of command should be followed whenever possible:

- Parents should first contact their child's teacher with their concern. If the problem remains unresolved after speaking with the teacher:
- The director should be contacted and informed of the issue. If the problem is still unable to be resolved, the director will refer the concern to:
- The Board will be given all necessary documentation for discussion and will make recommendations and take appropriate measures to satisfactorily address the concern.

St. Edward Academy reserves the right to terminate a student's enrollment for any behavior that is deemed by the administration to be detrimental to the educational environment.

# Dress Code

## Uniforms

SEA uniforms create an enhanced climate for learning. An attractive standard of dress enhances school spirit, good self-image, and school unity. Uniforms set the tone for a proper work attitude in the classroom, reduce behavior problems and improve student performance.







All clothing will be neat, clean, well-fitting (not too tight) and in good repair.

Blouses and shirts must be tucked in. Students out of dress code may be sent home to change into appropriate clothing at the discretion of the Director,

Each Friday is Spirit Friday permits dressing in the official school Tshirt available through the director's office.

All Students, All Grades	
<p>SEA has selected the "White Navy Plaid" jumper, skirt and skort and tie items available from French Toast. Plain navy is also permitted. Please note that skirts and jumpers must meet our length requirement.</p> <p>French Toast Official School Wear carries school-approved items in sizes 2T (Toddler) through Young Mens (up to a 46 inch waist), Junior sizes, Missy sizes (up to 42 inch chest) and a large variety of items in Slim, Husky and Plus sizes. Sources for French Toast brand include FrenchToast.com, Amazon.com and Walmart.</p>	
<b>Hair</b>	<ul style="list-style-type: none"><li>• Hair must be neat, clean and out of eyes. Extreme hair color (i.e.: purple, green, etc.) and extreme hairstyles are not permitted (i.e.: Mohawks, man-buns).</li><li>• Boys' hair must not touch the shoulders.</li><li>• Hair accessories should not be excessive.</li></ul>
<b>Jewelry/ Make-up/ Nail Polish</b>	<ul style="list-style-type: none"><li>• Excessive make-up or jewelry is not acceptable.</li><li>• Nail polish is permitted on girls only, with the exception of black polish. No nail art is permitted.</li><li>• Boys are not permitted to wear earrings, nail polish, or make-up.</li></ul>
<b>Footwear</b>	<ul style="list-style-type: none"><li>• Closed toe dress shoes, tennis shoes, and boots in navy, black, brown or white are permitted. Shoes are to be clean and in good condition. Laces must be tied and any straps fastened. Younger children should wear shoes appropriate to outdoor play.</li><li>• Beach wear, flip flops, clogs or open toed shoes are not permitted.</li></ul>
<b>Blazers</b>	<ul style="list-style-type: none"><li>• Navy blue blazers are optional and may be purchased anywhere. An optional embroidered emblem is available through a local vendor.</li></ul>
<b>Sweaters/Outerwear</b>	<ul style="list-style-type: none"><li>• Please keep in mind that recess will take place outside. Make sure children are wearing appropriate outerwear.</li><li>• Hoodies are not permitted.</li><li>• Any solid color navy blue sweater or fleece is permitted in cardigan, or vest. Dress code requirements still apply for all sweaters and fleeces.</li></ul>

## Boys Uniform

<p><b>Slacks</b></p>	<ul style="list-style-type: none"> <li>• Navy blue dress slacks with navy or black belt.</li> <li>• Pants must be worn at the waist</li> <li>• No tight fitting pants allowed.</li> <li>• No blue jeans or cargo pants allowed.</li> </ul>	
<p><b>Shirts</b></p>	<p><b>Boys</b></p> <ul style="list-style-type: none"> <li>• White solid color polo shirt</li> <li>• Blue oxford button-down shirt</li> <li>• White oxford button-down shirt</li> <li>• May be long or short sleeve.</li> <li>• Must be tucked in at waist.</li> </ul>	  
<p><b>Shoes / Socks</b></p>	<ul style="list-style-type: none"> <li>• Black or Navy socks</li> <li>• Closed toed shoes in navy, black, brown, or white suitable for outdoor play</li> </ul>	
<p><b>Blazers</b></p>	<ul style="list-style-type: none"> <li>• Navy blue blazers are optional and may be purchased anywhere. An optional embroidered emblem can be obtained at a local merchant.</li> </ul>	

## Girls Uniforms

### Jumpers / Skirts / Skorts

#### Girls

- Any solid navy-blue skirt/skort or Jumper or
- “White Navy Plaid” skirt/skort or Jumper purchased from French Toast only.
- Any solid navy-blue skirt/skort or
- Skirt hem must come to top of knee.
- Wear privacy shorts under as needed.
- Navy blue leggings are permitted during cold weather only under a skirt which adheres to the required hem length to the knee.



### Tops / Blouses

#### Girls

- Any plain white polo shirt or white Peter Pan collared shirt.
- Blue button-down oxford shirt.
- White button-down oxford shirt.
- May be long or short sleeve.
  - Fabric must not be so thin as to be see-through. Otherwise, a white slip must be worn under the shirt.



### Blazer

- Blazers are optional and may be purchased anywhere. A navy-blue blazer with optional embroidered emblem.
- SEA embroidery design is available at a local store.



### Cross Tie

- A navy-blue cross tie or
- White Navy Plaid cross tie from French Toast.



### Shoes / Socks Chapel Veil

- White knee socks or bobby socks.
- Closed toed shoes in navy, black, brown, or white suitable for outdoor play.
- Chapel veils are optional but encouraged. Keep in mind that students will be making frequent visits to the Blessed Sacrament. Infinity veils work best for children.



## **INSTITUTIONAL IDENTITY**

Students and parents are prohibited from using the school's name or school logo in any inappropriate, slanderous, or unethical manner. Representations of the school, including but not limited to, banners, posters, and attire – including that sponsored by clubs, and organizations – must be in congruency with the school's guidelines and must be approved in the design stage by the Administration.

## **SOCIAL MEDIA**

Social Media is defined as any form of online publication or presence that allows interactive communication, including, but not limited to social networks, blogs, Internet websites, Internet forums and wikis (includes but is not limited to Facebook, Twitter, YouTube, Google, etc.).

- SEA adheres to all guidelines established in the Diocese of Tyler Ethics and Integrity Policy (E&I).
- All communication by school employees reflects on the Church and the school.
- Do not claim or in any way give the impression or the appearance of representing the official position of the school or the teachings of the Church, unless you have written authorized to do so.
- All school social media sites shall be clearly branded and identified to provide institutional authority and to avoid confusion.
- Never divulge confidential information.
- Do not cite others, post photographs or videos of other individuals or link to their material without express written approval. Media involving minors must have written parental approval.
- Practice Christian charity.

STUDENT/PARENT HANDBOOK  
Acknowledgement Page

Please take time to review the Student/Parent Handbook with your child/children. Be sure that you understand completely and accept fully the spirit of the contents. After you have read and discussed the policies and rules with your child/children, please sign and return this page to the St. Edward Academy office on or before the first day of school for the 2026-2027 term. Return this form to your oldest child's teacher. Please feel free to print the Handbook as a reference guide.

---

We have read, understand, and agree to abide by the rules and regulations, as a condition of enrollment, as outlined in the St. Gregory Cathedral School Student/Parent Handbook.  
Student(s) Name(s)    Grade(s)    Homeroom(s)    (Please Print)

---

Parent/Guardian Signature:

Date: